

Order no.: 154347

## Mobile scaffolding, 0.75 × 1.80 m, with chassis bar.



Platform height [mm]

3260	4660	5780	6620	7740	8578
9700	10540				

### Specification

Working height <b>5.26 m</b>	Scaffolding height <b>5.93 m</b>	Platform height <b>3.26 m</b>	Platform width <b>750 mm</b>	Platform length <b>1.8 m</b>
Load capacity <b>2 kN/m<sup>2</sup></b>	Weight <b>128 kg</b>	Indoor use, central installation <b>possible &amp; allowed</b>	Indoor use, lateral installation <b>possible &amp; allowed</b>	Outdoor use, central installation <b>possible &amp; allowed</b>
Outdoor use, lateral installation <b>possible &amp; allowed</b>	Ballasting of scaffolding, indoor, central installation <b>0 kg</b>	Ballasting of scaffolding, indoor, lateral installation <b>40 kg</b>	Ballasting of scaffolding, outdoor, central installation <b>60 kg</b>	Ballasting of scaffolding, outdoor, lateral installation <b>140 kg</b>
Predecessor product <b>154345, 170335</b>	Business division <b>MUNK Günzburger Steigtechnik</b>	Order no. <b>154347</b>	Price <b>€ 3,597.00</b>	Notice <b>Accessories necessary to fulfil DIN EN 1004-1:2021</b>

### Facts

- Mobile scaffolding made of sturdy round aluminium tubing with welded frame parts
- All scaffolding parts are also available individually as spare or extension parts
- Galvanised steel chassis bar for flexible change of working position (location/setup)
- Four Ø 200 mm swivel castors with centric load application, locking mechanisms and spindles

- Scaffolding is easily moved along the chassis bar by loosening eight screws
- Can be set up in central and lateral positions
- Aluminium toe boards and railing frames with integrated knee board as safety railing
- Installation and removal without tools from platform to platform thanks to push-fit connectors and quick-release fasteners
- Easy to handle thanks to individual lightweight parts
- Different platform lengths available (1.80 / 2.45 / 3.0 m)
- Working heights up to 12.45 m
- GS-tested as per DIN EN 1004
- Load class/scaffolding group 3: 2.0 kN/m<sup>2</sup>
- In order to meet the requirements of DIN EN 1004-1:2021, this scaffold must be retrofitted
- Option 1 - Conversion to MSG: 2 protective assembly railings telescopic (027991) are required for safe assembly, dismantling and conversion
- Option 2 - Conversion to SG: Replace the railings lengthwise with safety railings for mobile scaffoldings in the appropriate scaffold length (2 pieces per platform level). Replace the guardrail frame at the front (top platform level) with railing frame SG at the front in the appropriate width. Omit the diagonal braces above the first platform

### Scope of supply

- Push-fit frame, 0.75 m.: 2 x
- Push-fit frame, 0.75 m.: 2 x
- Railing lengthwise: 2 x
- Platform with trapdoor: 1 x
- Toe board front side: 2 x
- Toe board long side: 2 x
- Diagonal brace: 2 x
- Horizontal strut: 2 x
- Chassis bar: 2 x
- Swivel castor with spindle: 4 x
- Step-on bracket: 1 x
- Push-fit frame, 0.75 m.: 2 x

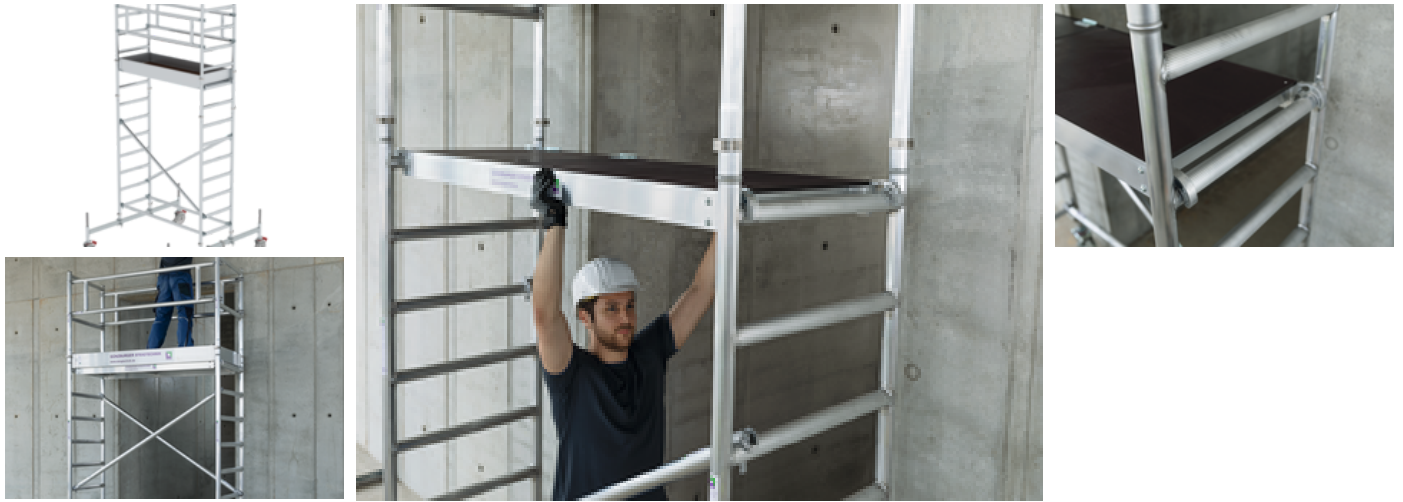
### Information on sustainability criteria

---

- Corporate certification: ISO 9001
- Corporate certification: EN 1090
- Corporate certification: EcoVadis
- RoHS
- REACH
- The MUNK Group complies with a Code of Conduct
- The Supply Chain Act does not apply due to our size
- The materials used are listed in the technical specification
- Resource-saving production: own photovoltaic systems
- Energy-efficient consumption during production: LED lighting
- Repairability, durability and quality: 15-year warranty on series products made in Germany
- Recyclability: Our products are mostly made of aluminium, steel or wood and can be fed directly into the recycling process.
- Socially acceptable working conditions in production: fair wages, gender equality
- Economical and recyclable packaging: no use of polystyrene, predominantly use of wood and cardboard, small amounts of plastic
- No health hazards for the users

## More product pictures

---



## Added value

---

### Safety at heights

- Optional protective assembly railing as safety railing during installation and removal
- Installation without the need of tools, uncomplicated and easy to handle
- Railing with integrated knee board and aluminium toe boards



### Highest quality

- User-friendly and robust design
- Low weight of the individual parts for easy handling
- Welded round tube frames for maximum stability
- All-round profiled rungs for safe ascent and descent



### Sturdy connection

- Automatically closing scaffolding claw with sophisticated geometry for a secure connection
- Innovative spring clip for plug-on frame – no accidental loosening or losing possible
- Transverse and diagonal braces for high stability



### Modular kit system

- More than 180 variants are possible by combining different individual parts
- Flexible adaptations and extensions possible at any time
- Individual parts at the original part price
- Installation and removal without tools



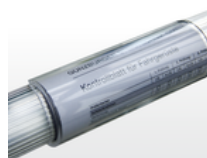
### Safe standing

- Adjustable outriggers with swing base or chassis bar ensure safe working depending on model
- Easy to handle
- Additional ballast weights required depending on application



### Everything at a glance

- Clip tray for clearly visible attachment of the necessary test documents to the scaffolding
- Weather and UV-resistant



### Flexible basis

- Swivel castors with load centring in braked condition
- Height adjustment for level compensation
- Various sizes and designs



Upgrade your scaffolding with a Safety Railing (SR) to ensure reliable protection at work thanks to an integrated edge protection system! Retrofitting reduces fall risks and qualifies for funding through the BG BAU Occupational Safety subsidy: Up to 50% of the purchase costs (max. €100 per measure) can be reimbursed.

✓ Suitable for this product: Compatible SR safety railings provide effective edge protection and are easy to retrofit.

All BG BAU members can benefit from this funding. The aim is to prevent workplace accidents, especially on construction sites, and to improve ergonomics. Detailed information from BG BAU is available at:

[www.bgbau.de/service/angebote/arbeitsschutzpraem](http://www.bgbau.de/service/angebote/arbeitsschutzpraem)

A quick guide to the funding programme and an overview of our eligible products can be found on our website under [Know-how](#).

## Corporate certifications

---

on sustainability criteria



Management System  
ISO 9001:2015  
ISO 14001:2015  
[www.tuv.com](http://www.tuv.com)  
ID 9108612548



**Nachhaltigkeit**  
**EcoVadis**  
sustainable supply management  
CSR-Rating in Silber 2022

