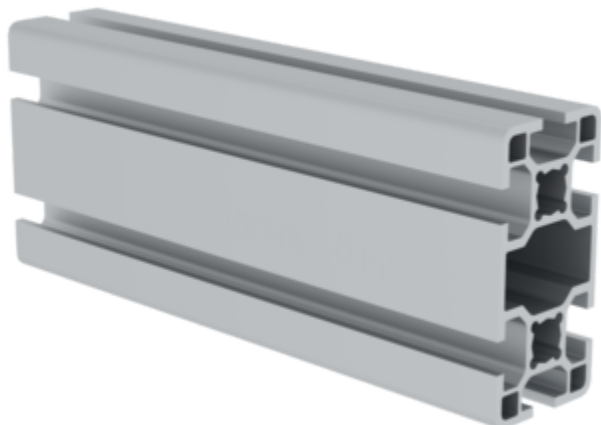


Order no.: 930105

Aluminium profile 30x60 mm



Specification

Profile type Construction profile	Length max. 6 m	Material Aluminium	Profile dimension X 30 mm	Profile dimension Y 60 mm
Weight per metre 1450 g/m	Groove size 6 mm	No. of grooves 6	Ix Area moment of inertia 53161 cm ⁴	Iy Area moment of inertia 18984 cm ⁴
Cross-sectional area FL 524.28 mm ²	Surface texture Anodised aluminium	Anodising Bright E6/EV4	End design Sawn	Core hole diameter M10
Order no. 930105				

Facts

- Construction profile made from aluminium
- Screw channel profile with T-slot
- For sturdy, versatile constructions
- Simple installation
- Versatile use
- Added visual and functional benefits

Description

Modular precision meets double load capacity! The MUNK aluminium profile 30 × 60 mm offers six 6 mm T-slots for intelligent plug connections and, thanks to its high moment of inertia, reliably supports even demanding assemblies.

Maximum stability with a slim design

- Bright anodised
- In different lengths up to 6000 mm

- Asymmetrical external dimensions of 30 × 60 mm create space for cables or panels and increase bending stiffness.
- $I_x = 53161 \text{ cm}^4$, $I_y = 18984 \text{ cm}^4$ – ideal for vertical frames, portals or cantilever arms.
- Only 1.450 kg/m dead weight: easy transport, lower drive loads in moving constructions.

Quick to assemble, expandable at any time

The continuous screw channels connect components with standard screws (M10 core channel) – without any welding. Components can be moved or added in seconds when layout changes are required.

Permanently protected & representative

- Lightly anodised aluminium E6/EV4 forms a wear-resistant surface and gives machine frames a high-quality appearance.
- Profiles are cut to length with millimetre precision up to 6 m and arrive ready for assembly – no waste, no reworking.

Typical areas of application

- Machine portals: Large spans thanks to high I_x stiffness in the longitudinal direction.
- Protective enclosures: Secure partitions with variable door and panel positions via six grooves.
- Linear units & axis systems: Precise guidance thanks to optimum bending stiffness.
- Ergonomic workstations: Can be retrofitted with accessories via all six connection points.

Discover the MUNK aluminium profile 30 × 60 mm – the strong basis for modular constructions that impress today and grow with you tomorrow.

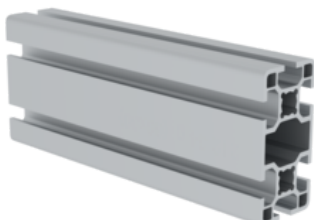
Scope of supply

- Aluminium profiles, sawn to the required length (max. 6 m): 1 x

Information on sustainability criteria

- Corporate certification: ISO 9001
- Corporate certification: ISO 14001
- Corporate certification: EN 1090
- Corporate certification: EcoVadis
- RoHS
- REACH
- The MUNK Group complies with a Code of Conduct
- The Supply Chain Act does not apply due to our size
- The materials used are listed in the technical specification
- Resource-saving production: own photovoltaic systems
- Energy-efficient consumption during production: LED lighting
- Repairability, durability and quality: 15-year warranty on series products made in Germany
- Recyclability: Our products are mostly made of aluminium, steel or wood and can be fed directly into the recycling process.
- Socially acceptable working conditions in production: fair wages, gender equality
- Economical and recyclable packaging: no use of polystyrene, predominantly use of wood and cardboard, small amounts of plastic
- No health hazards for the users

More product pictures



Corporate certifications

Standards for quality and sustainability

