

Order no.: 010006

Rung straight ladder  
without stabiliser



Number of rungs

- 6
- 8
- 10
- 12
- 14
- 16
- 18
- 20
- 24



Specification

Working height 3 m	Step design Rungs	Number of steps/rungs 6 rungs	Step/Rung height 30 mm	Step depth 30 mm
Step/Rung distance 280 mm	Type of non-slip protection Aluminium corrugated	Ladder length 1.91 m	Outer width 420 mm	Depth of side-rails 58 mm
Width of side-rails 25 mm	Max. load capacity 150 kg	Design type To lean against	Transport dimensions 1915 x 425 x 70 mm, 3 kg	Business division MUNK Günzburger Steigtechnik
Order no. 010006				

Facts

- Aluminium rung straight ladder
- Stable rectangular tube side-rails
- Rectangular rungs grooved on both sides, 30 x 30 mm
- 4-fold edged rung-to-side-rail connection
- Rung distance: 280 mm

- Ladder width: 420 mm (without stabiliser)
- nivello® ladder shoes with patented 2-axis inclination technology
- Maximum load: 150 kg
- Note: Straight ladders over 3.0 m can be used without a stabiliser only when they are used exclusively for their intended purpose (e.g. permanently installed, fitted with hooks, fastened with a belt)

### Scope of supply

- Ladder: 1 x

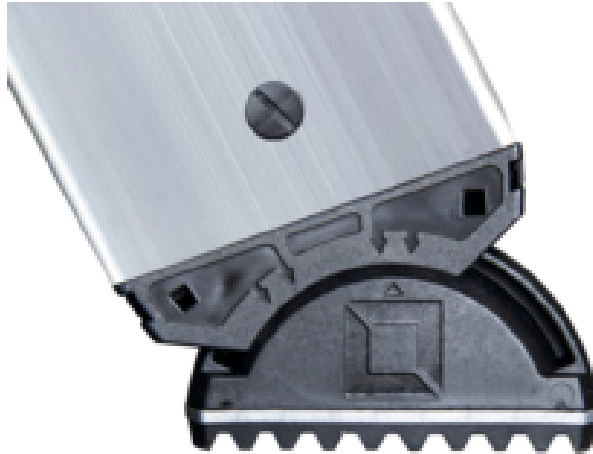
### Information on sustainability criteria

---

- Corporate certification: ISO 9001
- Corporate certification: ISO 14001
- Corporate certification: EN 1090
- Corporate certification: EcoVadis
- RoHS
- REACH
- The MUNK Group complies with a Code of Conduct
- The Supply Chain Act does not apply due to our size
- The materials used are listed in the technical specification
- Resource-saving production: own photovoltaic systems
- Energy-efficient consumption during production: LED lighting
- Repairability, durability and quality: 15-year warranty on series products made in Germany
- Recyclability: Our products are mostly made of aluminium, steel or wood and can be fed directly into the recycling process.
- Socially acceptable working conditions in production: fair wages, gender equality
- Economical and recyclable packaging: no use of polystyrene, predominantly use of wood and cardboard, small amounts of plastic
- No health hazards for the users

## More product pictures

---



## Added value

---

The movable ladder shoe sets new standards in stability

[Learn more](#)



Retrofit stabiliser

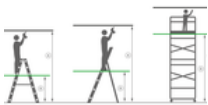
Safe, standards-compliant ascent

- For retrofitting existing ladders with ladder lengths over 3.0 m in compliance with standards
- Non-slip ladder shoes
- Available in different widths



Note: Working heights

- National regulations (e.g. TRBS 2121 Part 2 in Germany) must be complied with with regard to the maximum working height when using the ladder as a workstation.
- Information on [TRBS 2121 Part 2](#) has been summarised on our Service page
- Read our [tips and tricks](#) on how to calculate [working height](#)



## Corporate certifications

---

### Standards for quality and sustainability

