

Order no.: 012035

Retrofit kit clip-step R13 for step window cleaner's ladder upper section

Set for ladders with

- 4 steps
- 7 steps

Specification

Product type Accessories	Length 379 mm	Width 85 mm	Height 23 mm	Step depth 80 mm
Suitable for ladder type Special ladders	Set for ladders with 4 steps	Number of step paddings in the set 4 pcs.	Type of non-slip protection clip-step R13	Material Plastics
Transport dimensions (plus packaging) 380 x 98 x 35 mm, 0.49 kg	Business division MUNK Günzburger Steigtechnik	Order no. 012035		

Facts

- The clip-step R 13 step padding is a certified, non-slip covering for our step ladders. With its plastic profile with aluminium oxide particles, the clip-step R13 step padding meets the specifications of classification group R13 and was classified as V6 for the displacement space in this classification group
- The clip-step R 13 step padding provides extra workplace safety, particularly in wet or oil-contaminated work environment
- The clip-step R13 step padding is clipped onto the step to cover the whole surface and is custom-fit; it can be removed again without damage to the ladder and leaving no residue

- The clip-step tread cover is applied to step ladders up to the maximum accessible step according to DIN EN 131 and thus functions as a visual check for the correct use of the ladder

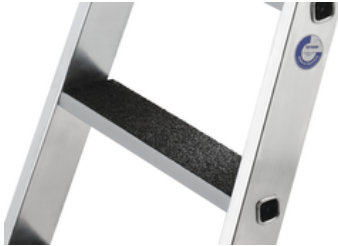
Scope of supply

- Clip-step R13 step paddings (different lengths): 4 x
- Assembly instructions: 1 x

Information on sustainability criteria

- Corporate certification: ISO 9001
- Corporate certification: ISO 14001
- Corporate certification: EN 1090
- Corporate certification: EcoVadis
- RoHS
- REACH
- The MUNK Group complies with a Code of Conduct
- The Supply Chain Act does not apply due to our size
- The materials used are listed in the technical specification
- Resource-saving production: own photovoltaic systems
- Energy-efficient consumption during production: LED lighting
- Repairability, durability and quality: 15-year warranty on series products made in Germany
- Recyclability: Our products are mostly made of aluminium, steel or wood and can be fed directly into the recycling process.
- Socially acceptable working conditions in production: fair wages, gender equality
- Economical and recyclable packaging: no use of polystyrene, predominantly use of wood and cardboard, small amounts of plastic
- No health hazards for the users

More product pictures



Corporate certifications

Standards for quality and sustainability

